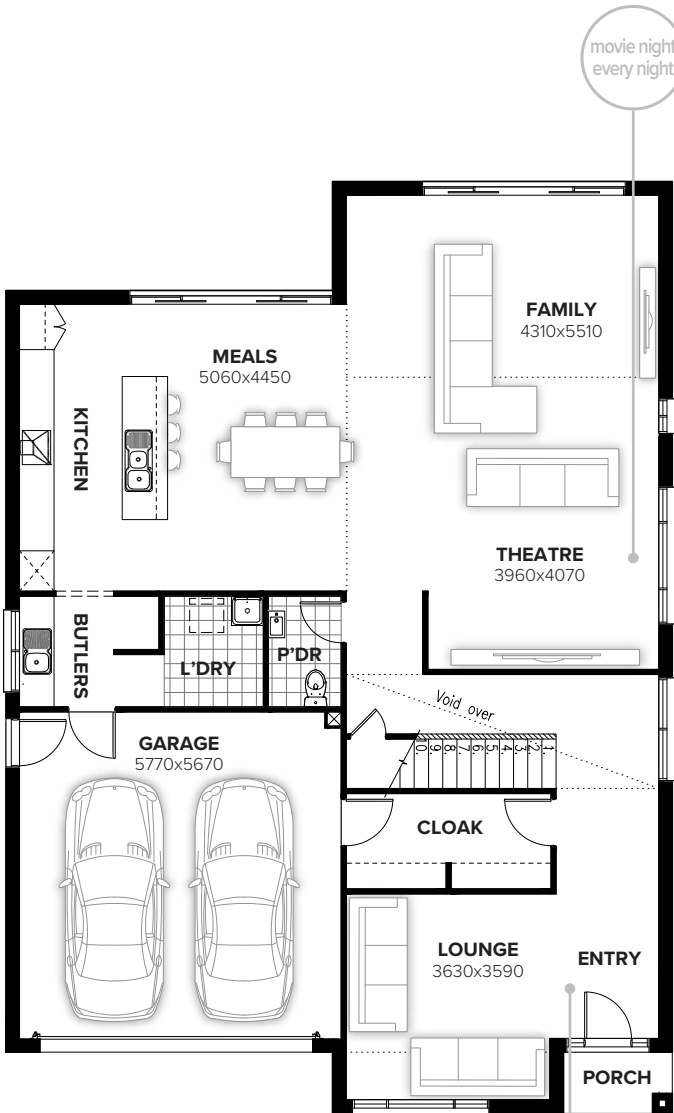


LINDFIELD

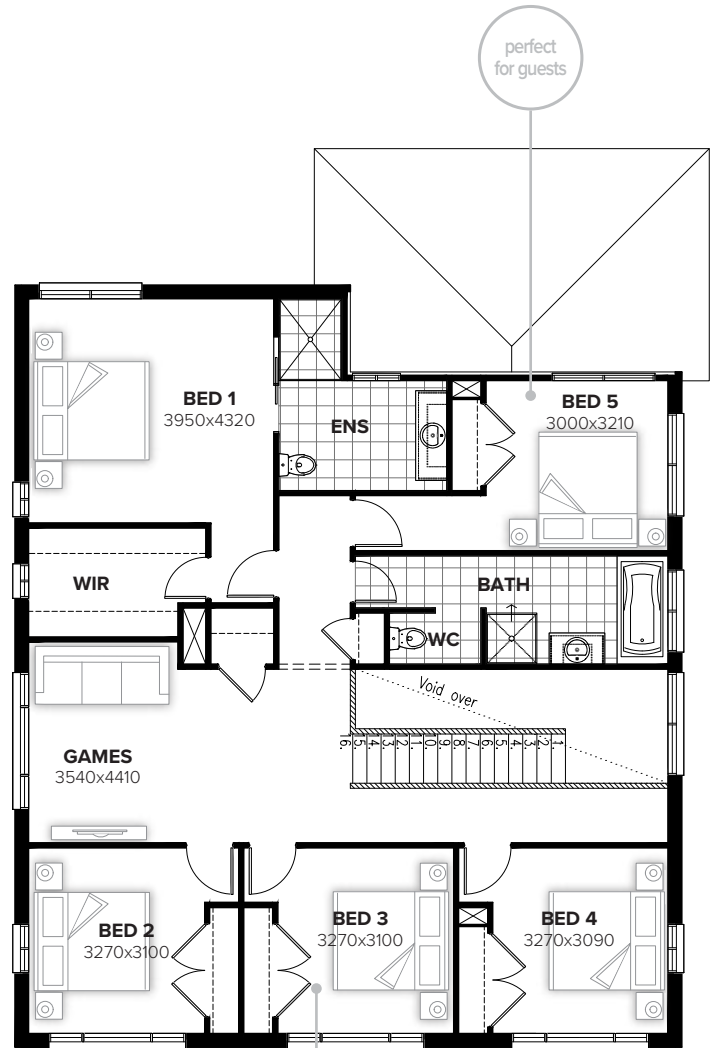


LINDFIELD 314

5 2.5 0 2



ground floor



first floor

residence	276.10sqm	29.72sq
porch	2.10sqm	0.23sq
garage	35.40sqm	3.81sq
total	313.60sqm	33.76sq

home width	11.75m
home length	16.43m

Listed details based on Oxley façade floorplan (illustrated)

Call 13 BURBANK Visit burbank.com.au

Burbank 
#noplacelikehome

*Copyright conditions. All photos and illustrations are representative only. Floor plans and specifications may be varied by Burbank without notice, the dimensions are diagrammatic only and a Building Contract with final drawings will display correct dimensions and detail. All designs are the property of Burbank and must not be used, reproduced, copied or varied, wholly or in part without written permission from an authorised Burbank representative. Copyright Burbank Australia (NSW) Pty Ltd. ABN 88 610 822 870. NSW BL 295627C. ACT BL 2016566.